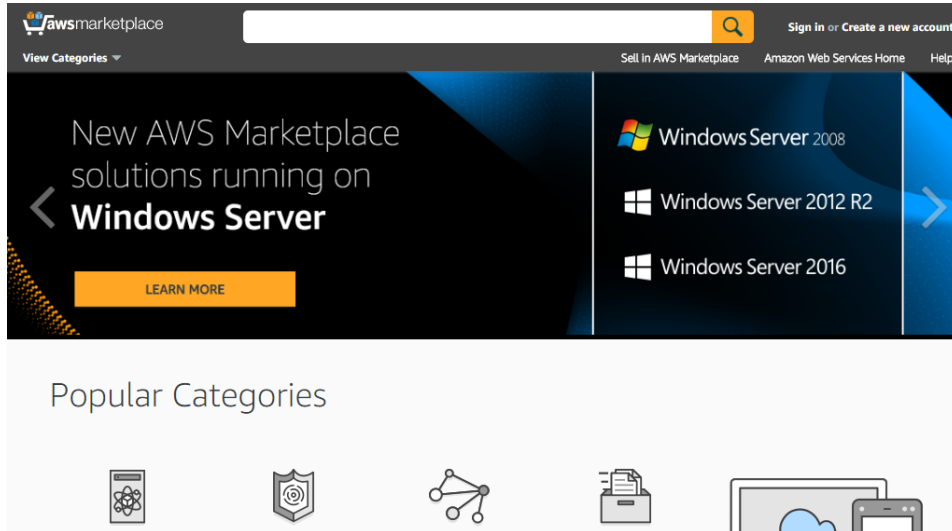


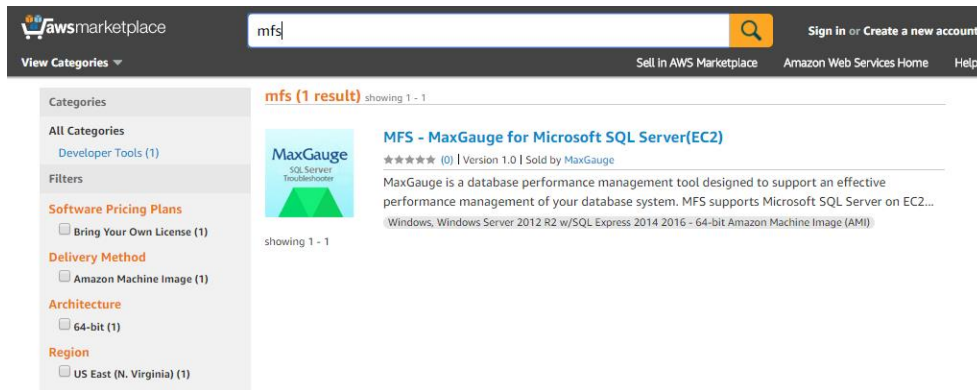
■ MFS on AWS설치 가이드

(1) 아마존 마켓플레이스 화면으로 이동

<https://aws.amazon.com/marketplace>

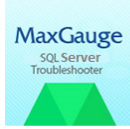


(2) MFS 검색 후 **MFS - MaxGauge for Microsoft SQL Server(EC2)** 선택



(3) Delivery Methods를 선택

- Region 선택 후 **Continue** 버튼 클릭



MFS - MaxGauge for Microsoft SQL Server(EC2)

on Windows Server 2012 R2 w/SQL Express 2014 2016
Sold by: MaxGauge | See product video

MaxGauge is a database performance management tool designed to support an effective performance management of your database system. MFS supports Microsoft SQL Server on EC2. MFS collects Database metrics(connections, session details etc) and system metrics(CPU, disk free space etc).

Customer Rating	★★★★★ (0 Customer Reviews)
Latest Version	1.0
Operating System	Windows, Windows Server 2012 R2 w/SQL Express 2014 2016
Delivery Method	64-bit Amazon Machine Image (AMI) (Read more)
Support	See details below
AWS Services Required	Amazon EC2, Amazon EBS
Highlights	<ul style="list-style-type: none">▪ "MaxGauge for SQL Server" provides performance monitoring and analysis report for Microsoft SQL Server(EC2) on AWS.▪ Installing agent is simple. First, download from S3(https://s3.ap-northeast-2.amazonaws.com/exem.mfs/agent_mfs.zip) to SQL Server. Second you can install agent by 1 click▪ Support HTML5: Users can monitor conveniently using a Chrome web-browser.

Continue You will have an opportunity to review your order before launching or being charged.

Pricing Details

For Region
Asia Pacific (Seoul)

Bring Your Own License (BYOL)
Available for customers with current licenses purchased via other channels.

Hourly Fees (includes Windows Server 2012 R2 w/SQL Express 2014 2016)
Total hourly fees will vary by instance type and EC2 region.

EC2 Instance Type	Software	EC2	Total
t2.medium	\$0.00/hr	\$0.082/hr	\$0.082/hr
t2.large	\$0.00/hr	\$0.156/hr	\$0.156/hr
m4.large	\$0.00/hr	\$0.224/hr	\$0.224/hr
m4.xlarge	\$0.00/hr	\$0.449/hr	\$0.449/hr
m4.2xlarge	\$0.00/hr	\$0.896/hr	\$0.896/hr
m4.4xlarge	\$0.00/hr	\$1.793/hr	\$1.793/hr

(4) 1-Click Launch 선택

- Version 선택 : 최신버전
- Region 선택 : Asia Pasific (Seoul)
- EC2 Instance Type : t2.medium (1~2개 SQL Server인스턴스 모니터링에 적합)
- VPC Settings : 적합한 VPC선택
- Security Group : 적합한 Security Group 선택
- Key Pair : 사용할 인증키 선택

Accept Software Terms & Launch with 1-Click버튼 클릭

Launch on EC2:

MFS - MaxGauge for Microsoft SQL Server(EC2) on Windows Server 2012 R2 w/SQL Express 2014 2016

1-Click Launch
Review, modify and launch

Manual Launch
With EC2 Console, API or CLI

Click "Accept Software Terms & Launch with 1-Click" to launch this software with the settings below

Once you accept the terms, you will have access to launch any version of this software in any supported region. For future launches, you can return to this page or launch directly from the EC2 console, APIs or CLI.

Version
1.0, released 12/09/2016

Region
Asia Pacific (Seoul)

EC2 Instance Type
t2.medium

VPC Settings
Will launch into: subnet-e1ac16ac (100.100.0.0/24)

Security Group
default

Key Pair
ec2_seoul

Price for your Selections:

Bring Your Own License (BYOL)
Available for customers with current licenses purchased via other channels.

\$0.08 / hour
\$0.08 t2.medium EC2 Instance usage fees +
\$0.00 hourly software fee hourly software fee

\$0.114 per GB-month of provisioned storage
EBS General Purpose (SSD) volumes

Launch with 1-click

You will be subscribed to this software and agree that your use of this software is subject to the pricing terms and the seller's [End User License Agreement \(EULA\)](#) and your use of AWS services is subject to the [AWS Customer Agreement](#).

Cost Estimator

Bring Your Own License (BYOL)
Available for customers with current licenses purchased via other channels.

plus

\$59.04 / month
EC2 Instance usage fees
Assumes 24 hour use over 30 days

AWS Infrastructure Charges

\$59.04 / month
Cost varies for storage fees
\$59.04 hourly EC2 instance fees for t2.medium
Varied EBS Storage and data transfer fees [↗](#)

(5) 아래 화면이 나오면 **SIGN IN TO AWS CONSOLE** 버튼을 클릭한다.

✓ Thank you for launching MFS - MaxGauge for Microsoft SQL Server(EC2)

An instance of this software is now deploying on EC2.
Software and AWS hourly usage fees apply when the instance is running and will appear on your monthly bill.

Next Steps:

- The software will be ready in a few minutes.

Software Installation Details

Product	MFS - MaxGauge for Microsoft SQL Server(EC2)
Version	1.0
Region	ap-northeast-2
EC2 Instance Type	t2.medium
VPC	vpc-1f8dfc76
Subnet	subnet-e1ac16ac
Security Group	default
Key Pair	ec2_seoul

[Return to Product Page](#)

Related Links

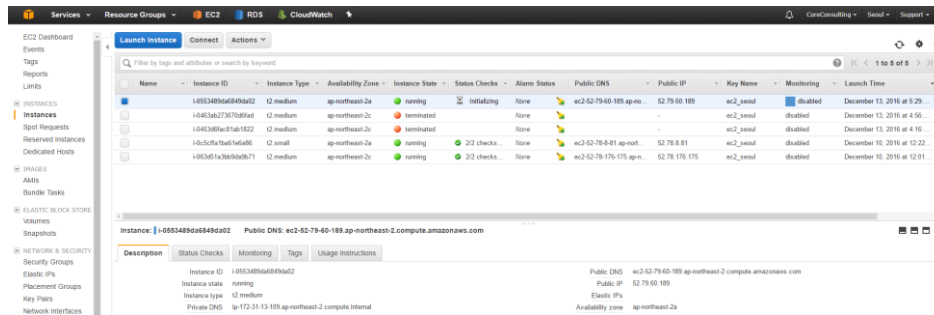
- [AWS Management Console](#)
- [Your Software](#)
- [Continue shopping on AWS Marketplace](#)

Service Catalog

Click [here](#) for instructions to deploy Marketplace products in [AWS Service Catalog](#).

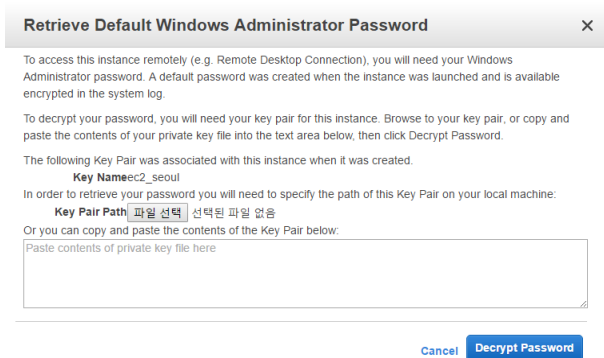
[AWS Marketplace on Twitter](#) [AWS Marketplace Blog](#) [RSS Feed](#) [SIGN IN TO AWS CONSOLE](#)

(6) EC2 Instances 정보 확인



(7) Windows 패스워드 확인

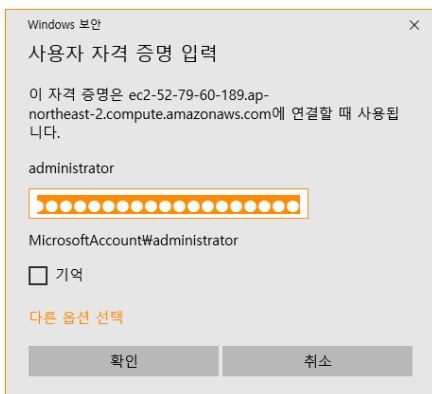
- Actions → Get Windows Password



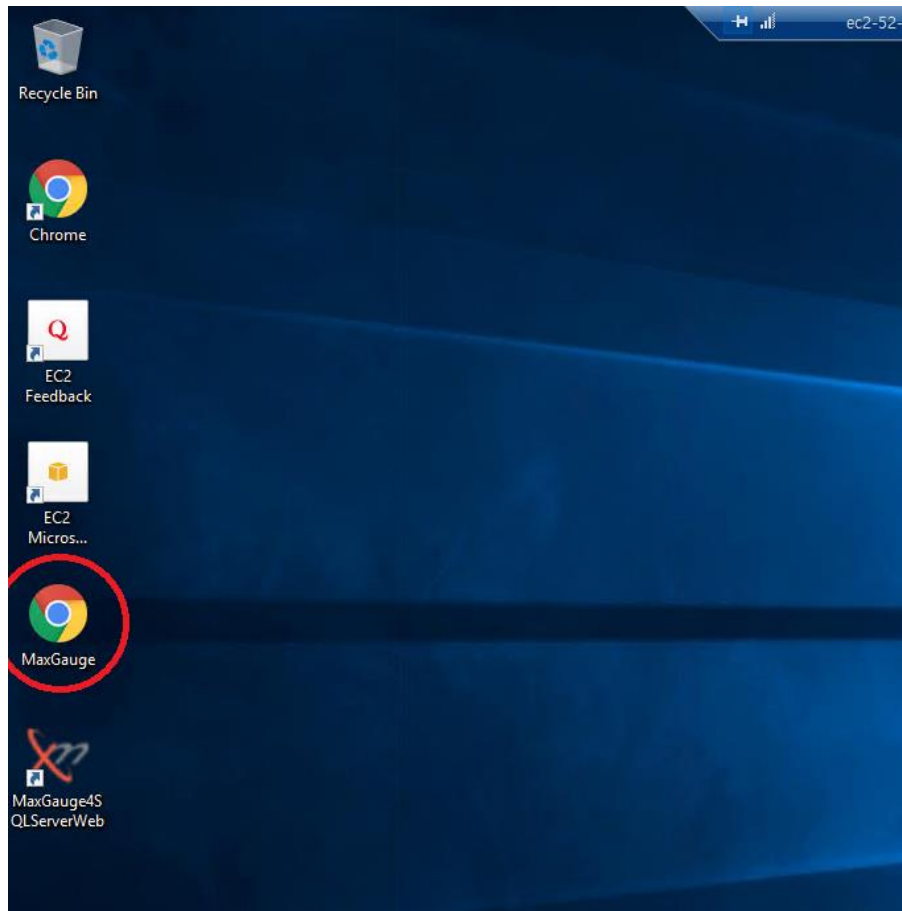
- 파일선택(인증키 선택) → Decrypt Password

- Public DNS, User name, Password 확인

(8) 위에서 확인한 정보로 윈도우 원격데스크톱 연결

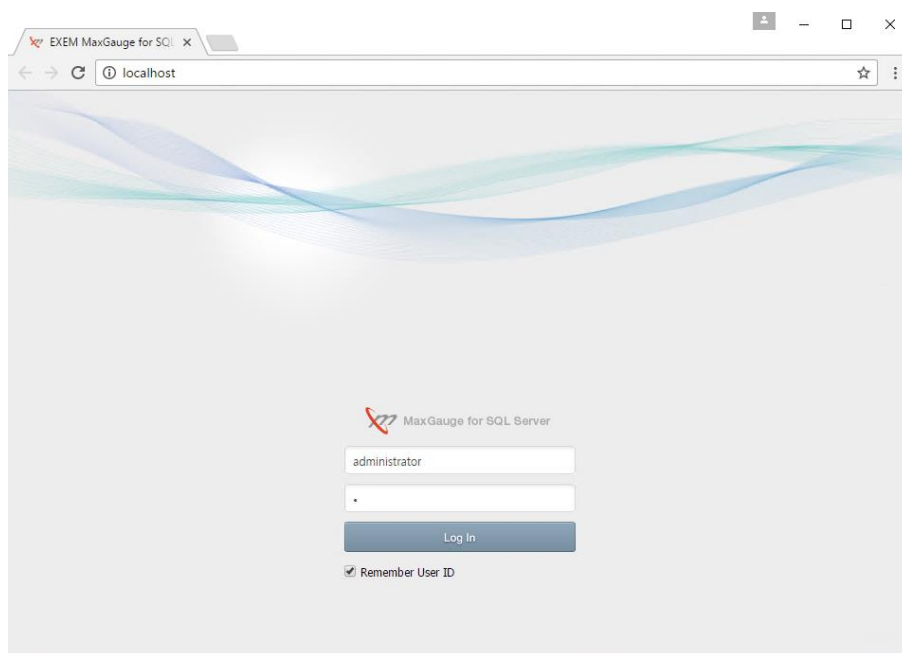


(9) 크롬(MaxGauge) 실행

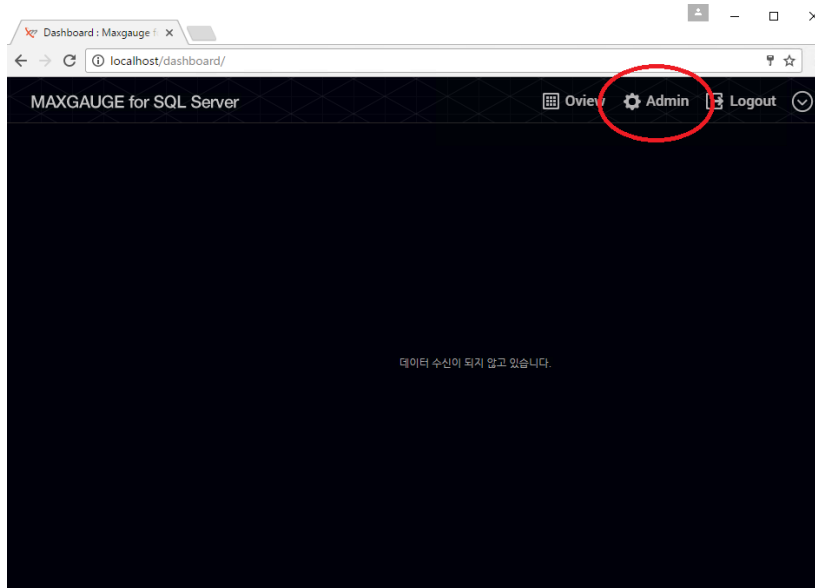


(10) MFS 접속

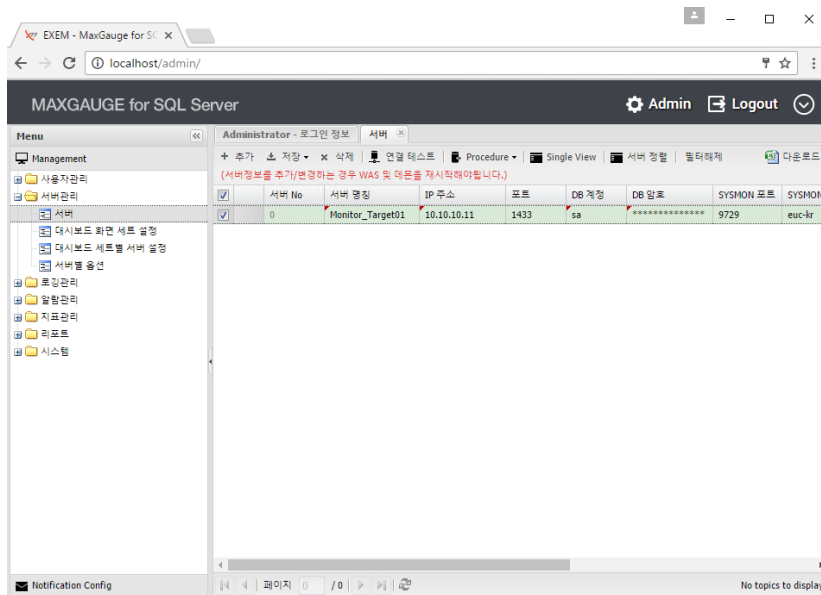
- ID : administrator, Password : 1



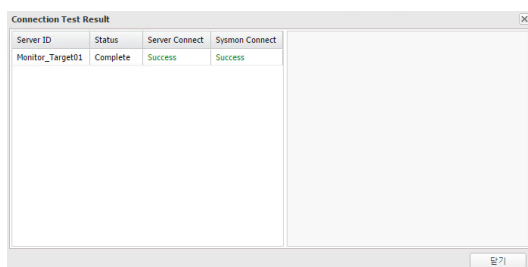
(11) MFS 모니터링 대상서버 등록



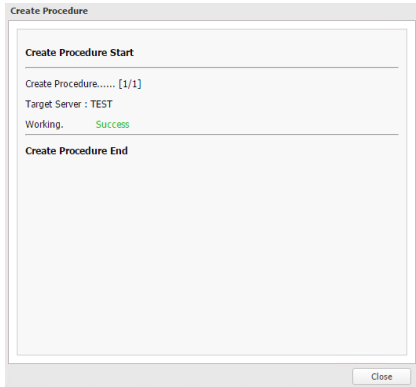
- 서버관리 → 서버 → 추가 → 서버정보입력



- 연결테스트버튼 클릭



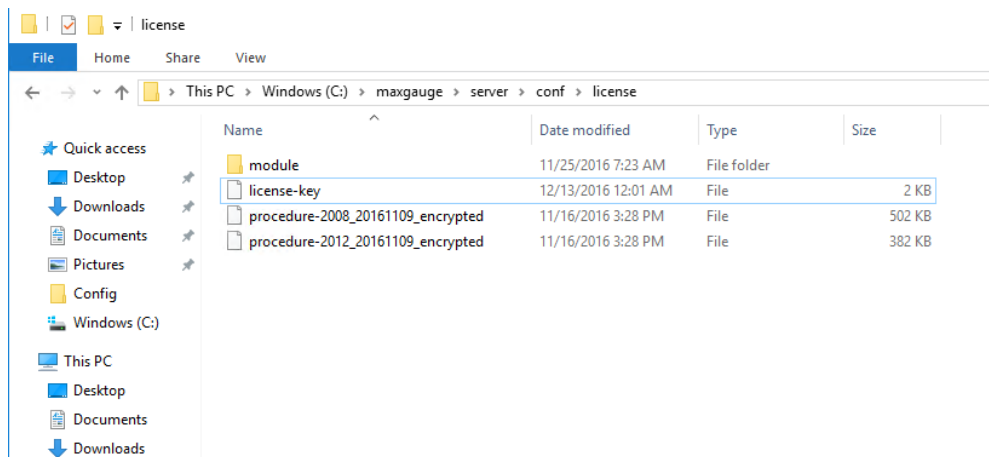
- Procedure버튼 클릭 → Procedure 생성



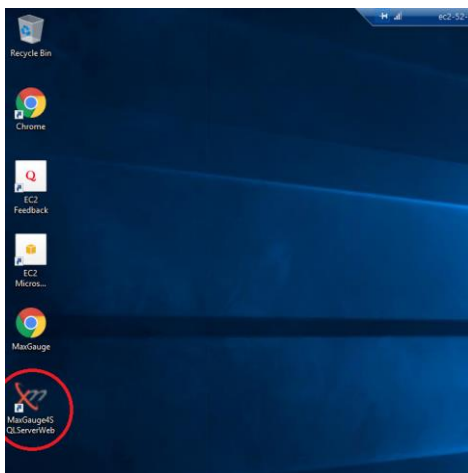
- 저장버튼 클릭 → 저장

(12) 라이선스키 등록

- 전달받은 라이선스키를 해당 위치(C:\maxgauge\server\conf\license)에 복사

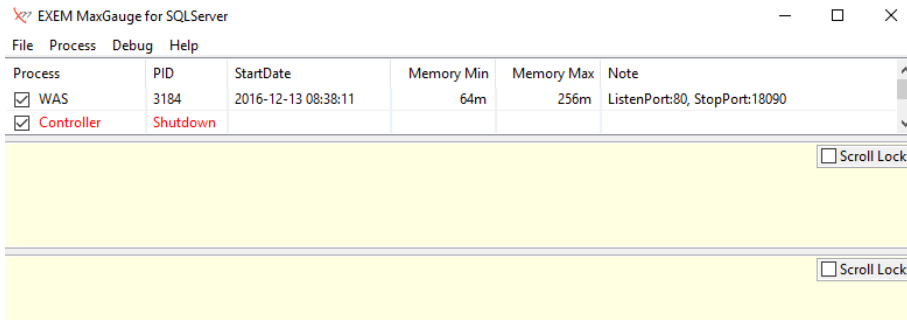


(13) MFS Management Console 실행



(14) Logging Controller 실행

- **Process**버튼 클릭 → Controller Start



(15) 크롬(MaxGauge) 실행

